

February 15, 2017



Paver Express

A bi-weekly news and information resource from the Interlocking Concrete Pavement Institute

[Home](#) | [Paving Systems](#) | [Project Profiles](#) | [Resource Library](#) | [Education & Certification](#) | [Events](#) | [Newsroom](#) | [Subscribe](#) | [Archive](#) | [Advertise](#)

- Search Past Issues
- View Web Version
- Advertise

ICPI NEWS

2017 ICPI Annual Meeting Taking Place in Phoenix, AZ



TSHP

The [2017 ICPI Annual Meeting](#) is in full swing at the Arizona Grand Resort in Phoenix. All committee materials are available on the Members Only portal in the [2017 Annual Meeting Materials](#).

Be sure to follow ICPI on [Facebook](#) (ICPIFANS), [Instagram](#) (icpipavers) and [Twitter](#) (@ICPI) to stay up-to-date with the various events at the Annual Meeting.

Did You Know? ICPI Releases the 2016 Annual Report



ICPI

ICPI published and will release the 2016 Annual Report this month. Be sure to check your mailbox or view the Annual Report [here](#).



SPONSORED CONTENT

Promoted by [Pathfinder Systems](#)

- [Tiger Model S](#) - First one coming to the States soon. Call us to see it in action (616) 395-8447
- [Playing with Blocks Video](#) - See how easy it is to operate a TIGER
- [Basalite Installs a Tiger PS-1400 HD in Tracy, CA](#) - Basalite Concrete Products earns premier NCMA/ICPI plant certification
- [Bergen Predictive Maintenance Sensor](#) - What if you could predict failures on your manufacturing equipment?
- [Test Container Press Release](#) - Pathfinder's partner, Curetec has the answer to Controlled Curing of Concrete Products



Regional HNA Installer Championship Return in 2017



ICPI

ICPI is currently working with organizers of the 2017 Regional HNA Installer Championships. Winners of Regional Championship will participate in the national 2017 HNA Installer Championship at the Hardscape North America show, Oct. 19-20 in Louisville, Kentucky. Events are already scheduled for:

- April 4 — Northeast Hardscape Expo, Providence, RI (New England Region)
- March 15-18 — National Collegiate Landscape Competition, Provo, UT

Additionally, events are again being planned in:

- Lacey, WA (Northwest Region)
- San Jose, CA (Western Region)
- Fort Worth, TX (South Central Region)
- Indianapolis, IN (Eastern Region)

READ MORE

PRODUCT SHOWCASE

Columbia, we know paver molds.

We make molds for any machine and proudly manufacture our equipment in the U.S. We are a leading supplier of big board molds to the paver industry.



Specialized surface textures, custom engineering and extensive R&D, all while setting the standard for delivery times worldwide.

[Visit us online to learn more.](http://www.columbiemachine.com/molds)

ICPI Currently Conducting 2017 Industry Sales Profile among Industry



Producers

ICPI

ICPI is currently conducting research among industry producers for the 2017 Industry Sales Profile, which provides the industry's most accurate and up-to-date sales information for the U.S. and Canadian markets. A print questionnaire and email has been sent to producers. Participating producers will receive a free copy of the survey report as appreciation for taking the time to respond. This survey is being conducted on behalf of ICPI by Industry Insights of Columbus, Ohio, an independent consulting firm. All responses will be held in strict confidence by Industry Insights. If your company is interested in participating or has questions, please contact Michael M. Becher, CPA, Vice President, Industry Insights, Inc. Tel: 614-389-2100 ext. 114 or mbecher@industryinsights.com.



Save the Date for the ICPI Regional Commercial Paver Sales Course



ICPI

In an effort to bring more concrete paver-related educational programs to the West Coast region, the Interlocking Concrete Pavement Institute (ICPI) will hold a two-day Regional Commercial Paver Sales Course on March 30-31 in Oakland, California. Contact the Manager of Education, Anya Plana-Hutt, at aplana-hutt@icpi.org or visit the [Regional Sales Course page](#) on the ICPI website.

ICPI Releases Results from Member Needs Assessment



ICPI

More than 300 representatives of member companies participated in the 2015-2016 ICPI Member Needs Assessment conducted in January 2017. The results show:

- 99 percent of voting members and 96 percent of non-voting members participating in the assessment agreed that ICPI was achieving its mission to deliver education and technical guidance leading to awareness, acceptance and use of segmental concrete pavement systems in the United States and Canada.
- 100 percent of voting and 94 percent of non-voting members responding indicated that ICPI membership was important to their companies.
- Participating members rated the following ICPI programs the highest — (1) technical support, (2) providing networking and education opportunities at HNA, (3) communicating industry news and association news and resources and (4) construction support.
- 92 percent of all members participating in the assessment rated the responsiveness of ICPI's staff as

- either excellent or good, while 0% rated it poor.
- 88 percent of all members responding indicated that they were likely to recommend ICPI to a potential member.

2017 Northeast Hardscape Expo — Register Now!



ICPI

Come to the Northeast Hardscape Expo, the only regional trade show devoted to the hardscape industry. "Test drive" the tools and equipment before you purchase. Seminars and certifications are led by some of the top industry speakers in North America — these individuals understand contractors and landscape design professionals and know how to successfully run a contracting business. Come and network with industry leaders, manufacturer and supplier representatives and other leading authorities in the hardscape industry.

[READ MORE](#)

MEMBER NEWS

Monello Landscape Industries Featured in Hardscape Magazine



ICPI



Monello Landscape Industries LLC of Wayne, New Jersey, was featured on the cover and as the main story of the February and March 2017 edition of the *Hardscape Magazine*. [READ MORE](#)

ICPI Members: Got News to Share?



ICPI

Add ICPI to your news distribution list and have your news shared in the Paver Express. We encourage you to send news about your company, community service projects or key employees. Send press releases and other new items to [Reba Miller](#), Marketing & Meetings Coordinator.



GOVERNMENT/ECONOMIC INDICATORS

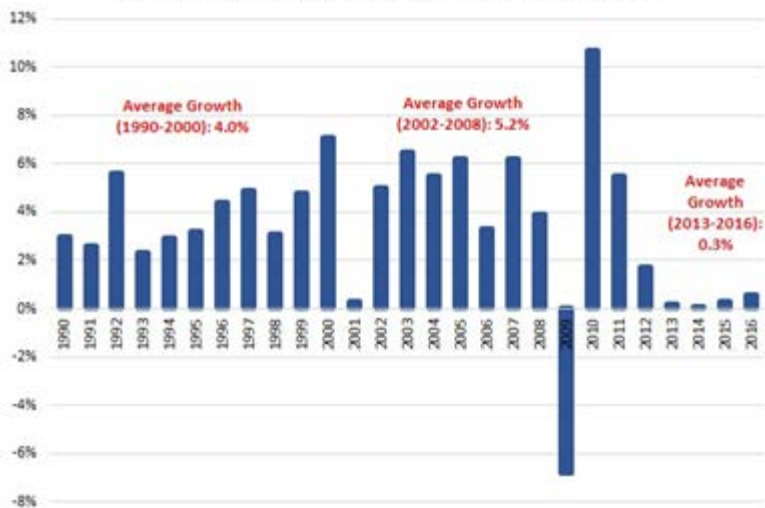
Manufacturing Labor Productivity Growth, 1990 – 2016



NAM

Manufacturing Labor Productivity Growth, 1990–2016

(Annual Percentage Change, Seasonally Adjusted, 2009 Chained Dollars)



The Institute for Supply Management's Manufacturing Purchasing Managers' Index continued to grow rather strongly, accelerating to its fastest pace since November 2014. The composite index rose from 54.5 in December to 56.0 in January, marking the fifth straight monthly expansion in the headline number. New orders and production grew strongly in January. Similarly, the Dallas Federal Reserve Bank reported that manufacturing activity expanded in January at its fastest rate since April 2010, with leaders very positive about the next six months. Indeed, the forward-looking outlook measure jumped to a level not seen in more than 12 years. **READ MORE**

Builders to Confront Labor, Financing Challenges



NAHB

More than 80 percent of builders surveyed say that the scarcity of labor leads the list of challenges for 2017. While employment is growing within the housing industry — adding 128,000 jobs over the last year, and 20,030 in January alone — unfilled construction jobs remain a key supply-side headwind. Housing markets also continue to be held back by a lack of inventory, which has kept pending existing home sales flat for most of the last two years.

The rising cost of credit is another point of concern as the new year begins. Federal Reserve data indicate that demand for multifamily debt and commercial real estate construction and development loans slowed or declined at the end of 2016, perhaps due to rising interest rates. New home sales were also down in December, which some analysts attribute to higher mortgage rates. However, regional data do not fully support that claim.

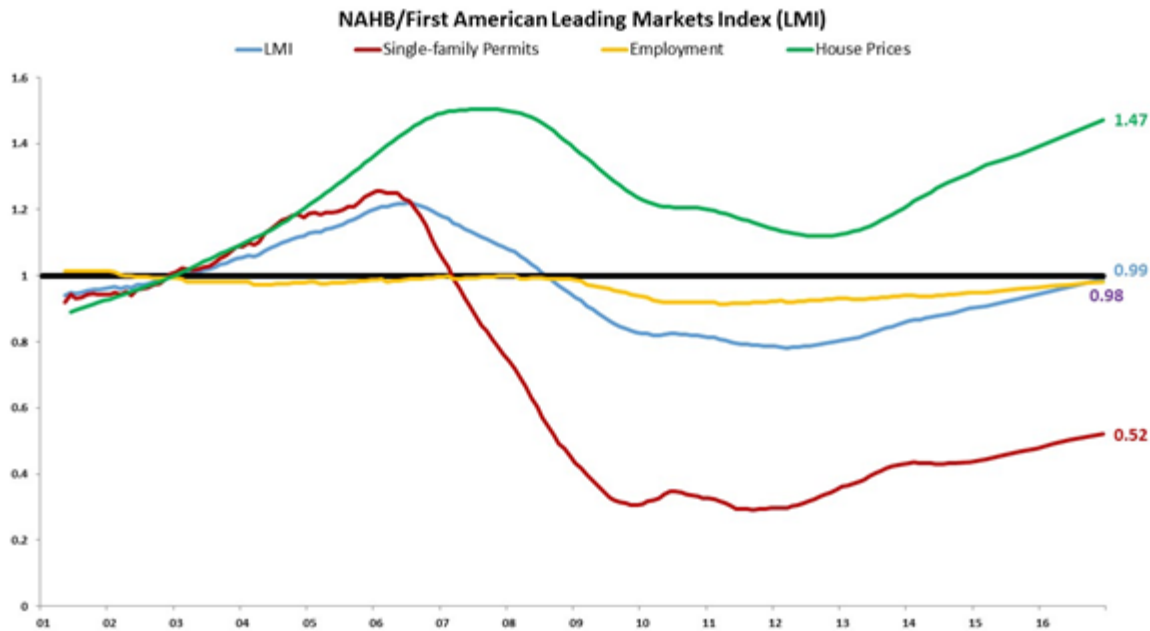
While rising rates will act as a drag on housing demand going forward, sales were up 12 percent over the course of 2016 and favorable demographics will cause sales to rise more in 2017, supported by rising wages and job growth.

—NAHB Chief Economist Robert Dietz

Nation Moves Closer to Recovery



NAHB



For the country as a whole, the NAHB/First American Leadings Markets Index (LMI), released today, rose to .99 in the fourth quarter of 2016, .01 point higher than its level in the third quarter of 2016, .98, and .05 point higher than its level from one year ago, .94. The LMI is now .21 point above its low of .78 reached in March 2012. The index uses single-family housing permits, employment, and home prices to measure proximity to a normal economic and housing market. The index is calculated for both the entire country and for 337 local markets, metropolitan statistical areas (MSAs). A value of 1.0 means the market (or country) is back to the last level of normality. **READ MORE**

IHS Markit Manufacturing PMIs, 2010 – 2017



NAM

The international economy has made tremendous strides over the past few months, and while there were a few pullbacks in growth in January, that progress was mostly sustained as we began 2017. The J.P. Morgan Global Manufacturing PMI was unchanged at 52.7, continuing to represent the fastest pace of growth since February 2014. After essentially stagnating in May 2016, the global economy has stabilized, generally moving in the right direction. In January, the rate of expansion quickened for new orders and exports, with both measures at their highest levels since mid-2014. At the same time, the employment index expanded for the sixth straight month, with the current expansion continuing to be at its swiftest rate since March 2014. **READ MORE**

INDUSTRY BUZZ

TRB Webinar — Permeable Concrete Pavements



Transportation Research Board

TRB will conduct a webinar from 2 to 3:30 p.m. EST ON Thursday, March 9 about permeable concrete pavements. This webinar will focus on information in [Technical Brief FHWA-HIF-16-004*](#). Additional information can be found in the [Technical Brief FHWA-HIF-15-007, *Permeable Interlocking Concrete Pavement*](#). Presenters will discuss two types of permeable concrete pavements and their use in structural and hydrological design. They will also address factors for successful construction and maintenance of permeable concrete pavements.

READ MORE

MISSED AN ISSUE OF THE PAVER EXPRESS? VISIT AND SEARCH THE ARCHIVE TODAY.

ICPI CALENDAR OF EVENTS

Date	Event	Location
March 2-3	Certified Concrete Paver Installer Course — Amcor	Boise, ID
March 2-3	Certified Concrete Paver Installer Course — Expocrete	Richmond, BC
March 6	Advanced Residential Paver Technician Course — Michigan Green Industry Association & Belgard	Novi, MI
March 6-7	Certified Concrete Paver Installer Course — Michigan Green Industry Association & Belgard	Novi, MI
March 7-8	Certified Concrete Paver Installer Course — Nicolock	East Syracuse, NJ
March 8-9	Certified Concrete Paver Installer Course — CST Pavers	Philadelphia, PA
March 9-10	Certified Concrete Paver Installer Course — Barkman Concrete	Regina, SK
March 14-15	Certified Concrete Paver Installer Course — Eagle Bay Hardscapes	Manassas, VA
March 14-15	Certified Concrete Paver Installer Course (Spanish Course) — Eagle Bay Hardscapes	Manassas, VA
March 15-16	Certified Concrete Paver Installer Course — Nicolock	North Haven, CT
March 23	PICP Specialist Course — Basalite	Meridian, ID
March 28-29	Certified Concrete Paver Installer Course — Landscape Ontario Hardscape Committee	St. Jacobs, ON
March 29	PICP Specialist — Belgard & Amcor Masonry	Salt Lake City, UT
March 30-31	ICPI Regional Commercial Paver Sales Course	Oakland, CA
April 4	2017 Montreal PICP Workshop	Montreal, QC
April 4-5	Certified Concrete Paver Installer Course — New England Concrete Manufacturers Association	Providence, RI
April 5	PICP Specialist Course — New England Concrete Manufacturers Association	Providence, RI
April 6-7	Northeast Hardscape Expo	Providence, RI
April 26	PICP Specialist Course — ICPI Northern California Chapter	Seaside, CA
Aug. 22-25	ICPI 2017 Summer Meeting	Toronto, ON

Oct. 18-20

Hardscape North America

Louisville, KY

To check out more ICPI Events, click [here](#).

ICPI WEBINARS

Date	Webinar	Time
March 7	Upselling to Homeowners (<i>Members Only</i>): Donny Duke — Director of Design, Engledow Estates	1 p.m. EST
March 21	Tech Spec 11 — Mechanical Installation of ICP and Tech Spec 15 — Specification of Mechanically Installer ICP: Andrew Vear — Director, PaverCrafters Ltd. and Robert Bowers, P.Eng — Director of Engineering, ICPI	1 p.m. EST
April 12	Providing Value and Selling to Design Professionals (<i>Members Only</i>): Mark Dooley, RLA — Architectural Sales, Basalite	1 p.m. EST
May 11	Inspection of PICP: David Smith — Technical Director, ICPI	1 p.m. EST
June 8	PICP Design Using Permeable Design Pro: David Smith — Technical Director, ICPI and Robert Bowers, P.Eng — Director of Engineering, ICPI	1 p.m. EST

To check out more ICPI Webinars, click [here](#).

TRENDING ARTICLES

Missed last week's issue? See which articles your colleagues read most.

- [Did You Know? ICPI Releases the 2016 Annual Report \(ICPI\)](#)
- [2017 Northeast Hardscape Expo — Register Now! \(ICPI\)](#)
- [2017 ICPI Annual Meeting Taking Place in Phoenix, AZ \(ICPI\)](#)
- [Did You Know? ICPI Releases the 2016 Annual Report \(ICPI\)](#)

Don't be left behind. [Click here](#) to see what else you missed.

ICPI Paver Express

Connect with ICPI



[Recent Issues](#) | [Subscribe](#) | [Unsubscribe](#) | [Advertise](#) | [Web Version](#)

Colby Horton, Vice President of Publishing, 469-420-2601 | [Download media kit](#)
Cait Harrison, Senior Content Editor, 469-420-2657 | [Contribute news](#)

Interlocking Concrete Pavement Institute

14801 Murdock Street Suite 230 | Chantilly, VA 20151 | 703-657-6900 | Contact Us

[Learn how](#) to add us to your safe sender list so our emails get to your inbox.

Powered By **MULTIBRIEFS**

7701 Las Colinas Ridge, Ste. 800, Irving, TX 75063